

# MOST COMMON CONTAMINANTS

Keep these common contaminants OUT of your recycling bin.



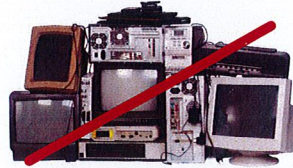
## NO RECYCLABLES IN PLASTIC BAGS

Empty recyclables directly into your bin and leave the plastic bag out.



## NO FOOD & LIQUIDS

Compost instead! Otherwise it belongs in the trash.



## NO ELECTRONICS & SMALL APPLIANCES

Donate if in good condition, or schedule a bulky item pickup, if available. Check [earth911.com](http://earth911.com) for a local drop-off site.



## NO TEXTILES, BEDDING, RUGS & CARPET

Donate these items if they are in good condition. Large quantities may require special disposal.



## NO TANGLERS, HOLIDAY LIGHTS, HANGERS & EXTENSION CORDS

They wrap around equipment and can shut down an entire facility! They all go in the trash.



## NO PLASTIC BAGS, FILM/SHEETING & FLEXIBLE FILM PACKAGING

Take plastic bags back to local retailers to keep them out of the recycling stream. Visit [plasticfilmrecycling.org](http://plasticfilmrecycling.org) to find a drop-off location near you.



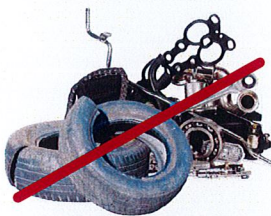
## NO PAPER NAPKINS, PLATES, CUPS & TISSUES

Compost if possible, and remember to recycle the cardboard tube.



## NO POLYSTYRENE FOAM

Foam and plastic containers are not recyclable curbside. Find drop-off programs for items like foam packing peanuts at [earth911.com](http://earth911.com).



## NO TIRES, AUTO PARTS & SCRAP METAL

(Not in recycling or trash.) All can damage equipment and are safety hazards. Contact your local scrap recyclers or retail tire stores for recycling options, or check [earth911.com](http://earth911.com) for a drop-off center near you.



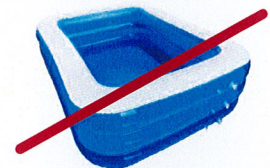
## NO CONCRETE, WOOD & CONSTRUCTION DEBRIS

Can damage equipment & are safety hazards. You may be able to schedule a bulky item pickup - otherwise throw it in the trash or order a roll off bin by contacting Waste Management Customer Service.



## NO YARD WASTE & WOOD

Compost or put in your yard waste cart, if available. Otherwise it belongs in the trash.



## NO NON-RECYCLABLE PLASTIC

Not everything that is plastic is recyclable! Recycle only food & beverage bottles, jugs and tubes.

To learn more, visit  
[wm.com/recycleright](http://wm.com/recycleright)

©2020 WM Intellectual Property Holdings, L.L.C.





# RECYCLE RIGHT

## ✓ ALWAYS RECYCLE / RECICLE SIEMPRE



**Plastic Bottles & Containers**  
*Botellas y envases de plástico*



**Food & Beverage Cans**  
*Latas de alimentos y bebidas*



**Paper**  
*Papeles*



**Flattened Cardboard & Paperboard**  
*Cartón y cartulina aplastados*



**Glass Bottles & Containers**  
*Botellas y envases de vidrio*

## ✗ DO NOT INCLUDE IN YOUR MIXED RECYCLING CONTAINER / NO INCLUIR EN SU CONTENEDOR DE RECICLAJE MIXTO



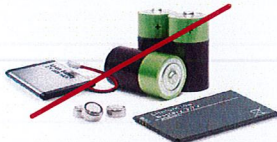
**NO Food or Liquids**  
*NO comida o líquidos*



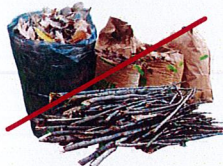
**NO Foam Cups & Containers**  
*NO vasos y recipientes de poliestireno*



**NO Loose Plastic Bags, Bagged Recyclables or Film**  
Empty recyclables directly into your bin.  
*NO bolsas y envolturas de plástico sueltas, o materiales reciclables embolsados*  
*Vacíé directamente los materiales reciclables en nuestro carrito*



**NO Batteries** – check local drop-off programs for proper disposal  
*NO baterías* – Verifique los programas locales de entrega para su correcta eliminación



**NO Green Waste**  
*NO desechos verdes*



**NO Clothing, Furniture & Carpet**  
*NO ropa, muebles y alfombras*

